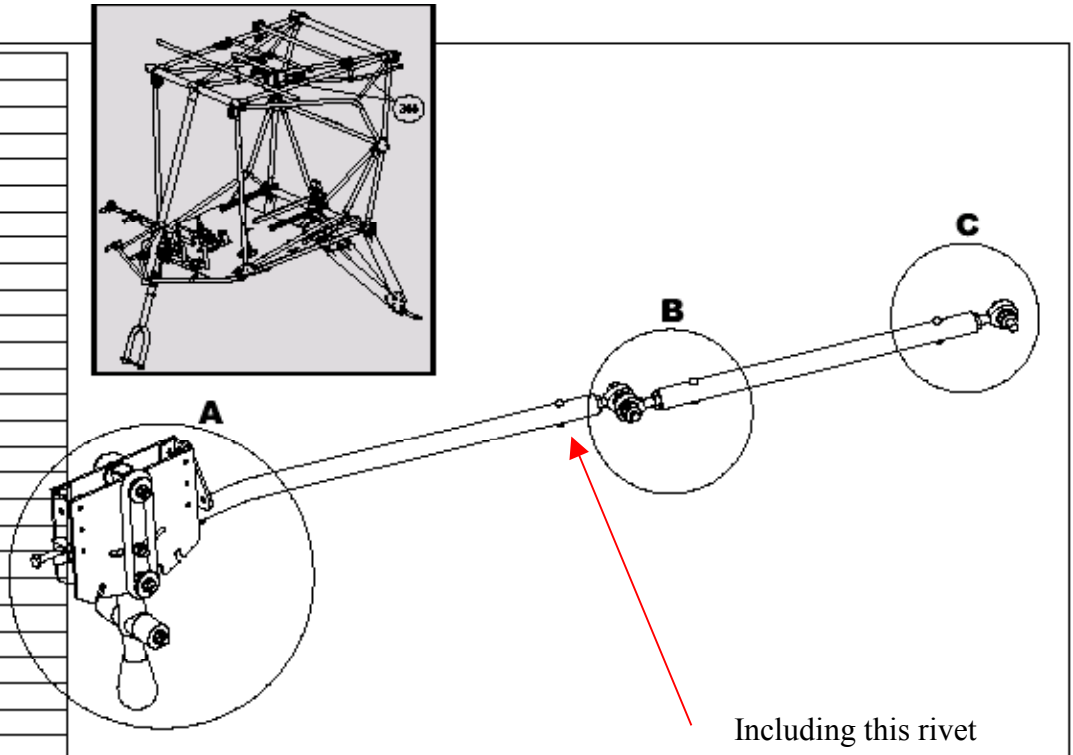


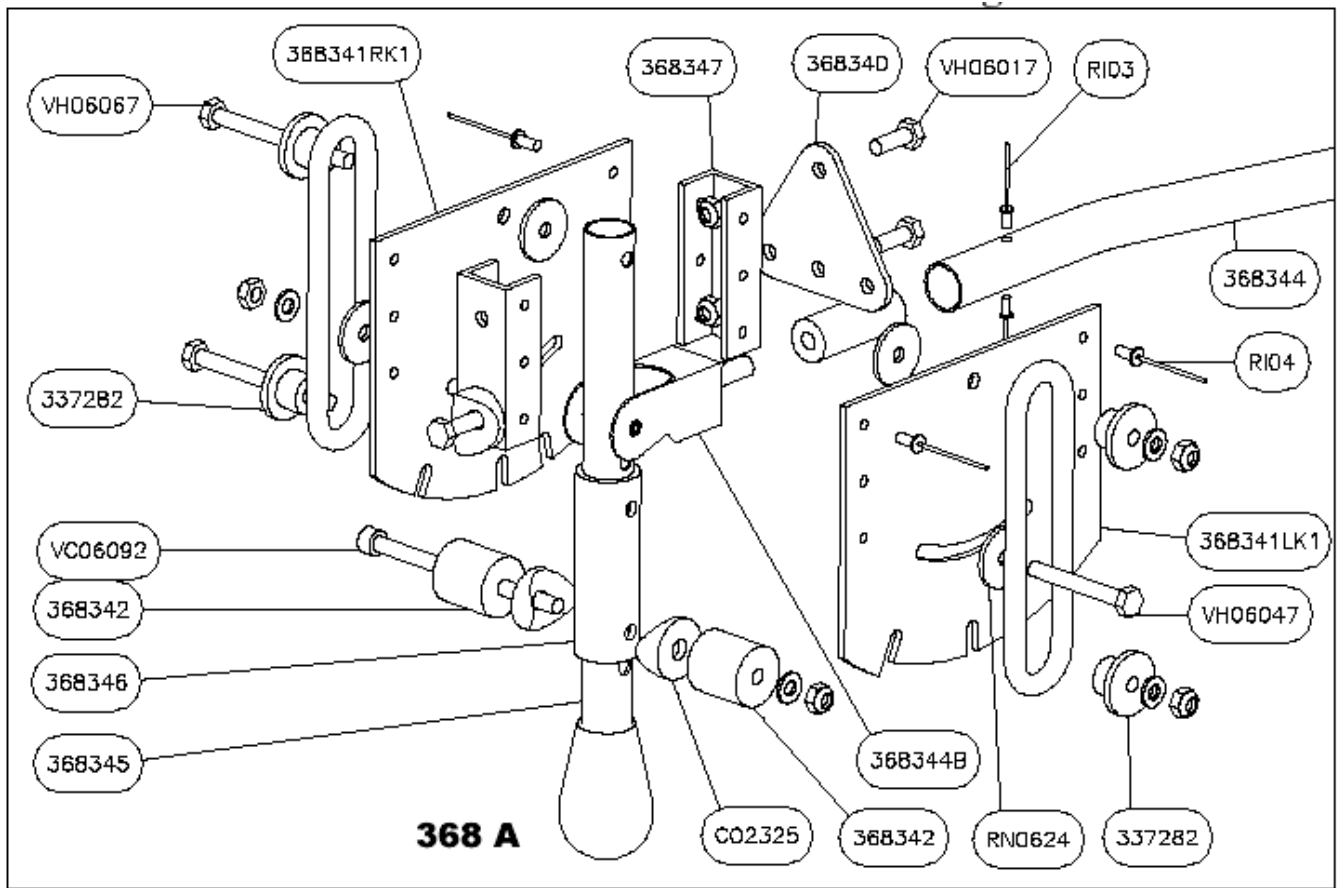
# Fitting M4 bolts to the flaps control

The 2 rivets R103 in diagram 368 A have to be replaced by 1 M4 bolt and nut, as well as the pair shown in the diagram below.

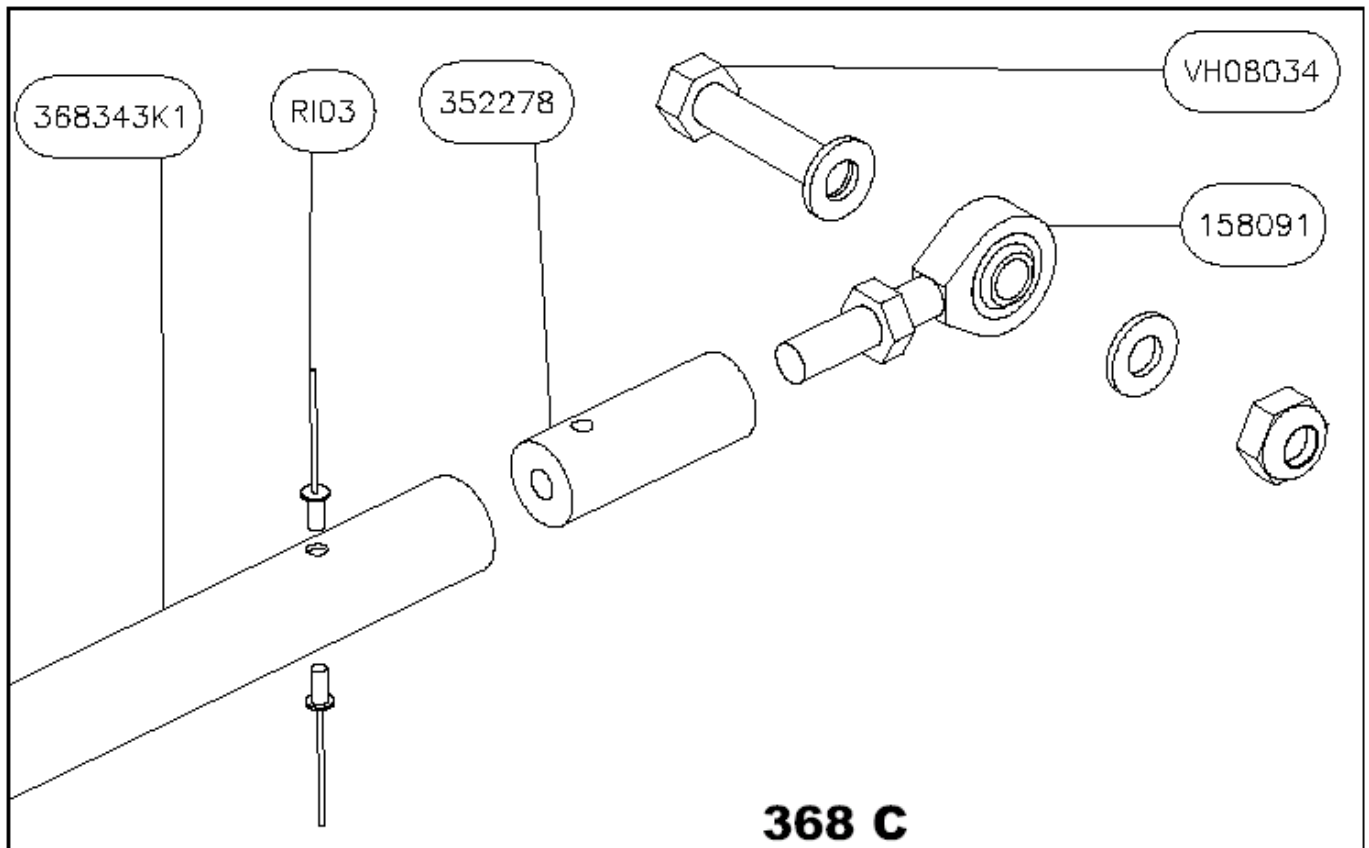
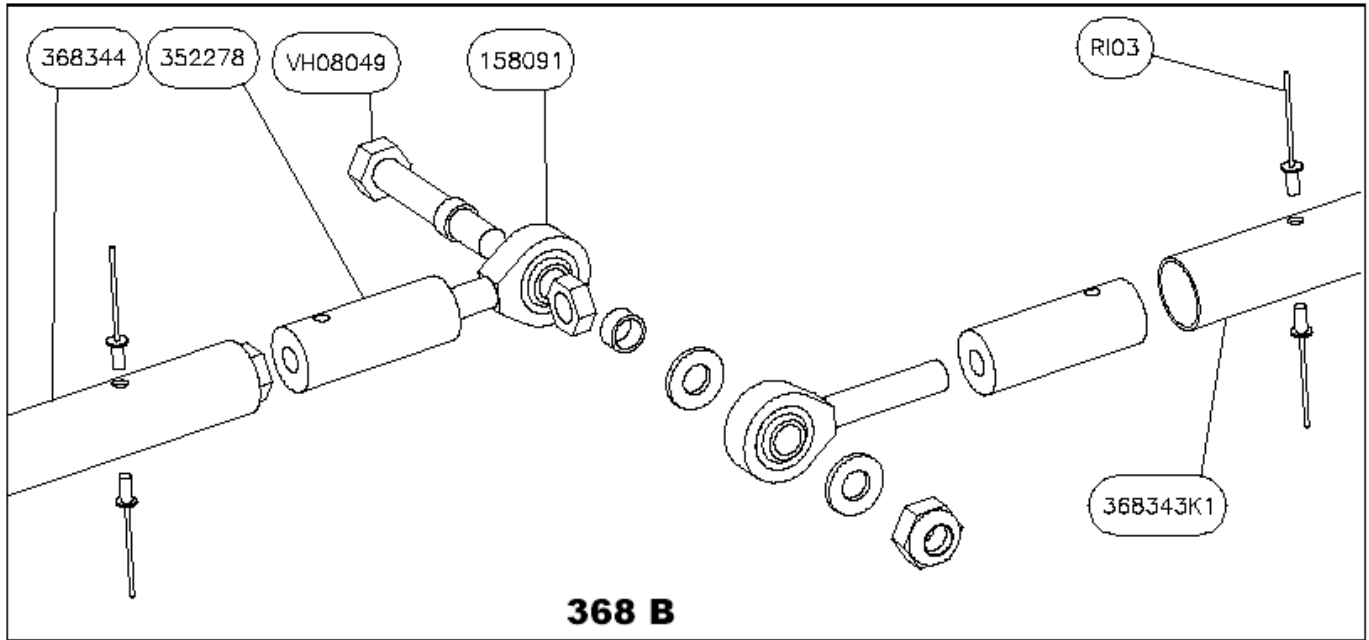
3	158091
4	337282
1	337286
4	352278
1	368340
1	368341LK1
1	368341RK1
2	368342
1	368343K1
1	368344
1	368344B
1	368345
1	368346
2	368347
3	CO2325
7	EC08F
3	EC08
2	EC08F
2	ENM10005
8	RI04
4	RM0612
4	RM0816
4	RM0624
1	VC06092
1	VC08029
2	VH06017
1	VH06042
1	VH06047
2	VH06067
1	VH08034
1	VH08049
Qté	Nom
	368



**FLAP CONTROL - 368 - COMMANDE DE VOILETS**



The 4 rivets R103 in 368B and the 2 rivets R103 in 368C have to be replaced by single M4 bolts and nuts through the tubes to hold the aluminium fittings



Note as well as the rivets on the flaps control arm on the right side of the cabin will also need to be replaced by M4 bolts and nuts.